

MFLED2

FANAL industrial luminaire, Satin white diffuser, 4000K, LED2, 900 lumens, 8W, White



Flicker Free

ECG

LOOPING

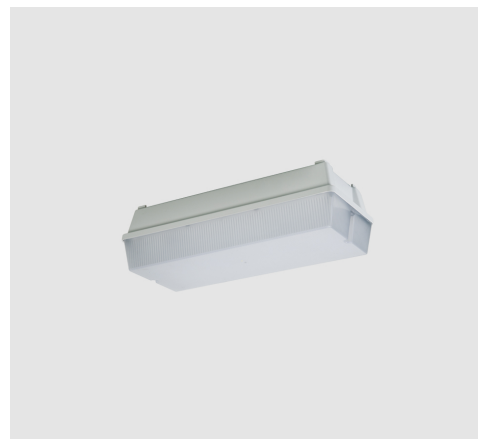


4000K



About Product

FANAL luminaire is designed and manufactured by Mazinoor for emergency lighting. Sturdy body, high lighting efficacy, and high ingress protection (IP65) are among the highlights of this luminaire.

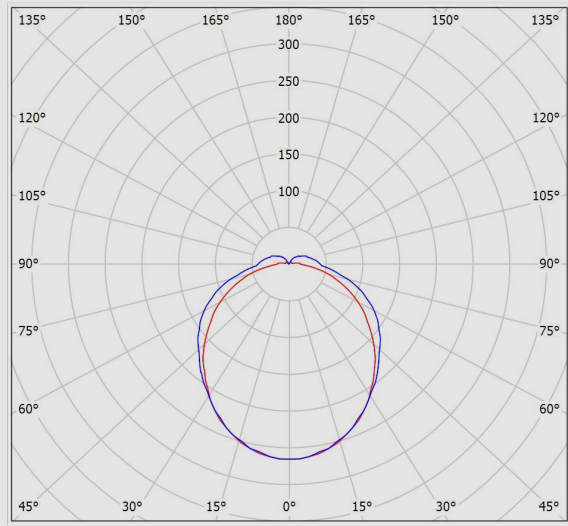


Technical Information

MFLED2

FANAL industrial luminaire, Satin white diffuser, 4000K, LED2, 900 lumens, 8W, White

Photometric Graph



Glare Evaluation According to UGR												
		70	70	50	50	30	70	70	50	50	30	
p Ceiling		50	30	50	30	30	50	30	50	30	30	
p Walls		20	20	20	20	20	20	20	20	20	20	
p Floor		20	20	20	20	20	20	20	20	20	20	
Room Size X Y		Viewing direction at right angles to lamp axis					Viewing direction parallel to lamp axis					
2H	2H	10.8	12.0	11.2	12.4	12.9	12.7	14.0	13.2	14.4	14.8	
	3H	11.9	13.0	12.3	13.5	13.9	14.4	15.6	14.9	16.0	16.5	
	4H	12.3	13.4	12.8	13.8	14.3	15.2	16.2	15.7	16.7	17.2	
	6H	12.6	13.6	13.1	14.1	14.6	15.8	16.8	16.3	17.2	17.8	
	8H	12.6	13.6	13.2	14.1	14.6	16.0	17.0	16.5	17.5	18.0	
	12H	12.7	13.6	13.2	14.1	14.7	16.2	17.2	16.8	17.7	18.2	
4H	2H	11.4	12.5	11.9	13.0	13.5	13.0	14.1	13.5	14.5	15.0	
	3H	12.7	13.6	13.3	14.2	14.7	14.9	15.8	15.4	16.3	16.9	
	4H	13.3	14.1	13.8	14.6	15.2	15.7	16.6	16.3	17.1	17.7	
	6H	13.6	14.4	14.2	14.9	15.5	16.5	17.2	17.1	17.8	18.4	
	8H	13.8	14.4	14.3	15.0	15.6	16.8	17.5	17.4	18.1	18.7	
	12H	13.8	14.4	14.4	15.0	15.7	17.1	17.7	17.7	18.3	19.0	
8H	4H	13.6	14.3	14.2	14.8	15.5	15.8	16.5	16.4	17.1	17.7	
	6H	14.1	14.7	14.7	15.3	16.0	16.7	17.3	17.3	17.9	18.5	
	8H	14.3	14.8	15.0	15.4	16.1	17.1	17.6	17.8	18.2	18.9	
	12H	14.5	14.9	15.1	15.5	16.2	17.5	18.0	18.2	18.6	19.3	
12H	4H	13.7	14.3	14.3	14.9	15.5	15.8	16.4	16.4	17.0	17.7	
	6H	14.2	14.7	14.9	15.3	16.0	16.7	17.2	17.4	17.8	18.5	
	8H	14.5	14.9	15.1	15.5	16.3	17.2	17.6	17.8	18.2	19.0	
	12H	14.5	14.9	15.1	15.5	16.3	17.2	17.6	17.8	18.2	19.0	
Variation of the observer position for the luminaire distances S												
S = 1.0H		+0.1 / -0.2					+0.1 / -0.1					
S = 1.5H		+0.3 / -0.5					+0.2 / -0.3					
S = 2.0H		+0.5 / -1.0					+0.6 / -0.6					
Standard table		BK05					BK07					
Correction												
Summand		-2.7					1.0					
Corrected Glare Indices referring to 900lm Total Luminous Flux												

Dimensional Drawing

