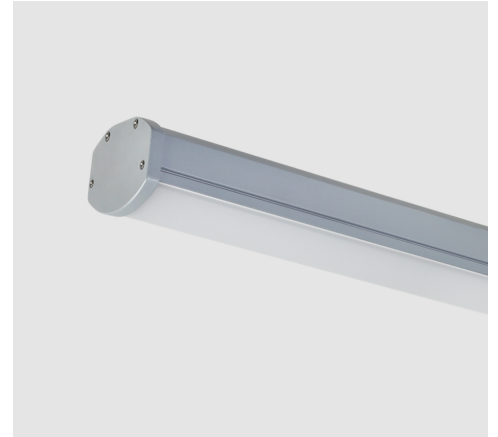


LEDiSEAL LED Dust & Moisture proof surface mount luminaire, Striped opal polycarbonate diffuser, Length: 60cm, 4000K, LED2, 2400 Lumens, 25W, Silver

About Product

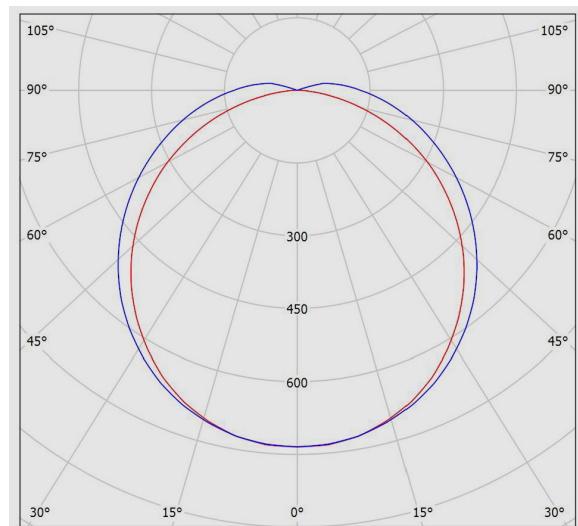
LEDiSEAL dust & moisture proof linear luminaire is Mazinoor state of the art design suitable for dusty and humid industrial areas. Aesthetically beautiful design, durability, UV free, high impact and thermal resistance, uniform light distribution, high efficacy, ease of installation, energy saving, environment friendliness, and high ingress protection (IP65) are among the highlights of this luminaire.



Technical Information

LEDiSEAL LED Dust & Moisture proof surface mount luminaire, Striped opal polycarbonate diffuser, Length: 60cm, 4000K, LED2, 2400 Lumens, 25W, Silver

Photometric Graph



Glare Evaluation According to UGR

		70	70	50	50	30	70	70	50	50	30
p Ceiling		70	70	50	50	30	70	70	50	50	30
p Walls		50	30	50	30	30	50	30	50	30	30
p Floor		20	20	20	20	20	20	20	20	20	20
Room Size X Y		Viewing direction at right angles to lamp axis					Viewing direction parallel to lamp axis				
2H	2H	20.0	21.4	20.4	21.7	22.0	21.4	22.7	21.7	23.0	23.4
	3H	21.3	22.5	21.7	22.9	23.2	23.5	24.7	23.9	25.0	25.4
	4H	21.8	22.9	22.2	23.3	23.6	24.5	25.7	24.9	26.1	26.4
	6H	22.0	23.1	22.5	23.5	23.9	25.6	26.7	26.1	27.1	27.5
	8H	22.1	23.1	22.5	23.5	23.9	26.2	27.2	26.6	27.6	28.0
	12H	22.1	23.1	22.5	23.5	23.9	26.8	27.8	27.2	28.2	28.6
4H	2H	20.8	22.0	21.2	22.4	22.7	21.9	23.1	22.3	23.4	23.8
	3H	22.3	23.3	22.8	23.7	24.2	24.2	25.2	24.6	25.6	26.0
	4H	22.9	23.8	23.4	24.2	24.7	25.4	26.3	25.9	26.8	27.2
	6H	23.3	24.1	23.8	24.5	25.0	26.7	27.5	27.2	28.0	28.4
	8H	23.4	24.1	23.9	24.6	25.1	27.4	28.1	27.9	28.6	29.1
	12H	23.4	24.1	23.9	24.6	25.1	28.1	28.8	28.6	29.3	29.8
8H	4H	23.5	24.2	24.0	24.7	25.2	25.7	26.4	26.2	26.9	27.4
	6H	24.0	24.6	24.5	25.1	25.7	27.2	27.8	27.7	28.3	28.8
	8H	24.2	24.7	24.7	25.3	25.8	28.0	28.5	28.5	29.0	29.6
	12H	24.3	24.8	24.9	25.3	25.9	28.9	29.3	29.4	29.9	30.5
	4H	23.6	24.3	24.1	24.8	25.3	25.7	26.3	26.2	26.8	27.3
	6H	24.3	24.8	24.8	25.3	25.9	27.2	27.7	27.7	28.3	28.8
12H	24.5	25.0	25.1	25.5	26.1	28.1	28.5	28.6	29.1	29.7	
Variation of the observer position for the luminaire distances S											
S = 1.0H		+0.1 / -0.1					+0.1 / -0.1				
S = 1.5H		+0.2 / -0.4					+0.2 / -0.2				
S = 2.0H		+0.4 / -0.8					+0.3 / -0.4				
Standard table Correction Summand		BK05 6.8					BK10 12.2				
Corrected Glare Indices referring to 2400lm Total Luminous Flux											

Dimensional Drawing

