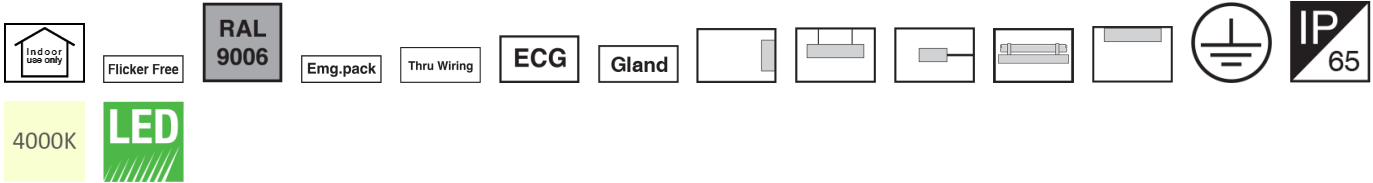


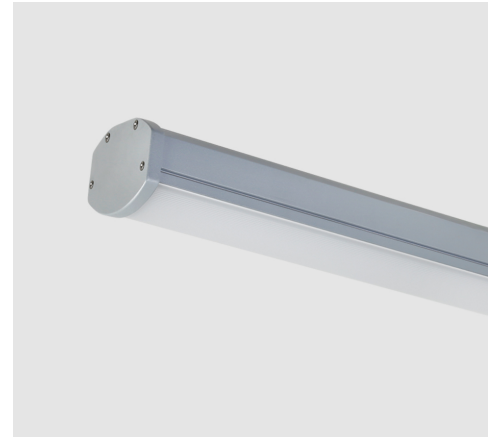
## M453L115LED3840

**LEDiSEAL dust and moisture proof linear luminaire, Matt striped diffuser, Length: 115cm, 4000K, LED3, 5000 Lumens, 38W, Silver**



### About Product

LEDiSEAL dust & moisture proof linear luminaire is Mazinoor state of the art design suitable for dusty and humid industrial areas. Aesthetically beautiful design, durability, UV free, high impact and thermal resistance, uniform light distribution, high efficacy, ease of installation, energy saving, environment friendliness, and high ingress protection (IP65) are among the highlights of this luminaire.



### Technical Information

Catalogue Code/product code:	M453L115LED3840
Mounting Type:	Pipe clamp mounting, Suspended, Surface Mounted, Wall mounting with bracket, Wall Mounted; Surface Mounted
Application:	Industrial area, Parking
Application consideration:	suitable Only for Indoor
Light source type:	LED
Module/ Lamp quantity:	2
CCT (Color temperature):	4000K - Neutral White
Light source:	LED
Lumen maintenance:	114000
Lumen maintenance factor:	L70
CRI (Color rendering index):	> 80
Power Consumption:	38
Luminous Flux:	5000
Efficacy (lm/W):	132
IP (Ingress Protection):	IP65
Insulation Class:	Class I
Max. Ambient Temperature:	+50°C
Min. Ambient Temperature:	-25°C

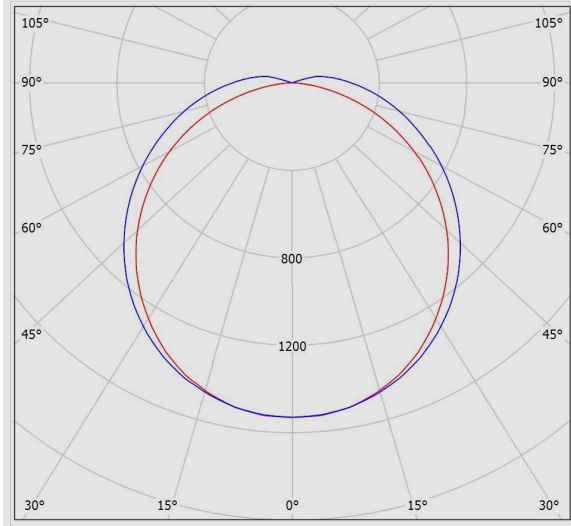
**M453L115LED3840**
**LEDiSEAL dust and moisture proof linear luminaire, Matt striped diffuser, Length: 115cm, 4000K, LED3, 5000 Lumens, 38W, Silver**

Ballast/ Driver:	Constant Current Driver (PF> 0.9)
FLICKER:	Flicker Free
Ballast/ driver Spec:	Non-dimmable
Ballast/ Driver (Channel quantity):	Single channel
Mains voltage:	220~240 VAC±10%
Voltage Frequency:	50/60 Hz
Wire / Cable Spec:	GF PVC solid wire
Wire cross section:	0.5
Terminal material:	Polycarbonate
Terminal Spec:	Tool free wire connection. Cable looping is possible. 3-Pole (Size: 2.5)
Cable Gland Spec:	Polyamide, 3-Pole Polyamide Gland with terminal (Size: 2.5)
Cable gland type:	PG13.5
Body Material:	Extruded aluminum profile
Body Coating:	Powder coated
Body Color:	Silver
RAL:	RAL9006
End Caps Material:	Die-Cast aluminum
Diffuser/Glass Material:	Polycarbonate
Diffuser/Glass Shape:	Striped and matt
Diffuser/Glass Characteristic:	Resistant to scratches, UV stabilized, Uniform light distribution, High efficiency
Light Distribution:	Uniform light distribution
Gasket Material:	silicon
Gasket Characteristic:	Ingress protection against dust and moisture. Resistant to pressure
Clamp Material:	Stainless steel
Clamp Characteristic:	Easy and safe tool free installation of the luminaire
Packaging type:	Nylon cover and carton
Order Option:	Through wiring, Emergency battery
Weight(Kg):	2.4
Dimensions(mm):	1150x86x68
Luminaire mechanical impact resistance:	IK07

**M453L115LED3840**

**LEDiSEAL dust and moisture proof linear luminaire, Matt striped diffuser, Length: 115cm, 4000K, LED3, 5000 Lumens, 38W, Silver**

**Photometric Graph**



**Dimensional Drawing**

