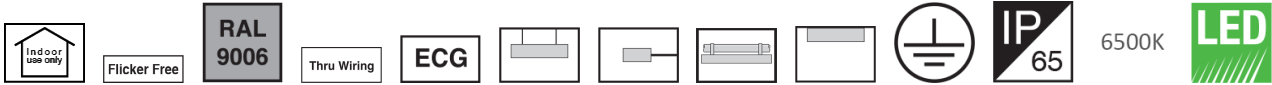


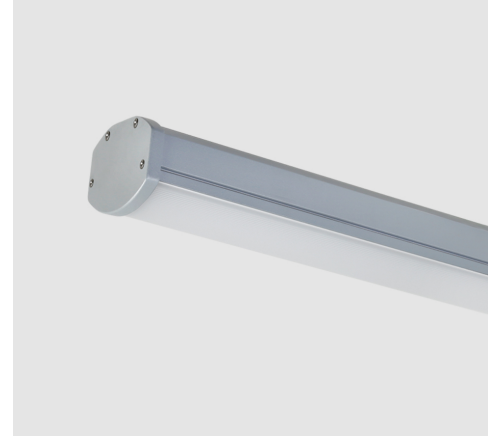
M453L145LED3865

LEDiSEAL dust and moisture proof linear luminaire, Matt striped diffuser, Length: 145cm, 6500K, LED3, 6500 Lumens, 46W, Silver



About Product

LEDiSEAL dust & moisture proof linear luminaire is Mazinoor state of the art design suitable for dusty and humid industrial areas. Aesthetically beautiful design, durability, UV free, high impact and thermal resistance, uniform light distribution, high efficacy, ease of installation, energy saving, environment friendliness, and high ingress protection (IP65) are among the highlights of this luminaire.



Technical Information

Catalogue Code/product code:	M453L145LED3865
Mounting Type:	Surface Mounted, Wall mounting with bracket, Pipe clamp mounting, Suspended
Application:	Industrial area, Parking
Application consideration:	suitable Only for Indoor
Light source type:	LED
Module/ Lamp quantity:	3
CCT (Color temperature):	6500K - Daylight
Light source:	LED
Lumen maintenance:	> 100.000 hours
Lumen maintenance factor:	L70
CRI (Color rendering index):	> 80
Power Consumption:	46
Luminous Flux:	6500
Efficacy (lm/W):	141
IP (Ingress Protection):	IP65
Insulation Class:	Class I
Min. Ambient Temperature:	-30°C
Ballast/ Driver:	Constant Current Driver (PF> 0.9)
FLICKER:	Flicker Free
Ballast/ driver Spec:	Non-dimmable

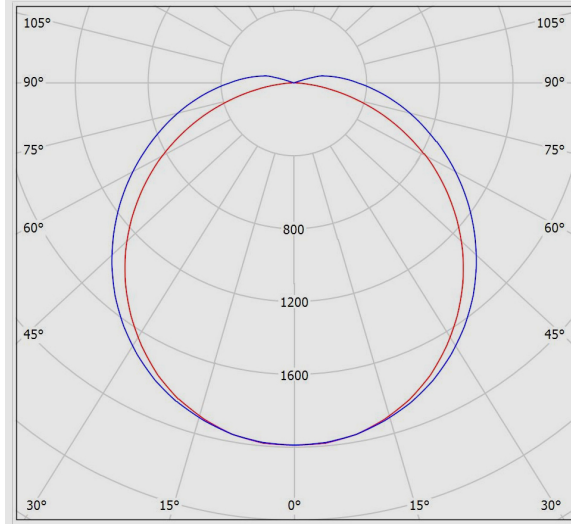
M453L145LED3865
LEDiSEAL dust and moisture proof linear luminaire, Matt striped diffuser, Length: 145cm, 6500K, LED3, 6500 Lumens, 46W, Silver

Ballast/ Driver (Channel quantity):	Single channel
Mains voltage:	198~264 VAC
Voltage Frequency:	50~60 Hz
Wire / Cable Spec:	GF PVC solid wire
Wire cross section:	0.5
Terminal material:	Polyamide
Terminal Spec:	Cable looping is possible, 3-Pole (Size: 2.5), Tool free wire connection
Cable Gland Spec:	3-Pole Polyamide Gland with terminal (Size: 2.5)
Cable gland type:	PG13.5
Body Material:	Extruded aluminum profile
Body Coating:	Powder coated
Body Color:	Silver
RAL:	RAL9006
End Caps Material:	Die-Cast aluminum
Diffuser/Glass Material:	Polycarbonate
Diffuser/Glass Shape:	Striped and matt
Diffuser/Glass Characteristic:	High efficiency, Resistant to scratches, UV stabilized, Uniform light distribution
Light Distribution:	Uniform light distribution
Gasket Material:	silicon
Gasket Characteristic:	Resistant to pressure, Ingress protection against dust and moisture
Clamp Material:	Stainless steel
Clamp Characteristic:	Easy and safe tool free installation of the luminaire
Packaging type:	Nylon cover and carton
Order Option:	Through wiring
Weight(Kg):	2.9
Dimensions(mm):	1450x86x68
Luminaire mechanical impact resistance:	IK07

M453L145LED3865

LEDiSEAL dust and moisture proof linear luminaire, Matt striped diffuser, Length: 145cm, 6500K, LED3, 6500 Lumens, 46W, Silver

Photometric Graph



Glare Evaluation According to UGR

p Ceiling		70	70	50	50	30	70	70	50	50	30
p Walls		50	30	50	30	30	50	30	50	30	30
p Floor		20	20	20	20	20	20	20	20	20	20
Room Size X	Y	Viewing direction at right angles to lamp axis					Viewing direction parallel to lamp axis				
2H	2H	18.5	19.8	18.8	20.1	20.4	20.9	22.2	21.2	22.5	22.8
	3H	19.5	20.7	19.9	21.1	21.4	22.9	24.2	23.3	24.5	24.8
	4H	19.8	21.0	20.2	21.4	21.7	24.0	25.1	24.4	25.5	25.9
	6H	20.0	21.1	20.4	21.5	21.9	25.0	26.1	25.5	26.5	26.9
	8H	20.0	21.1	20.5	21.5	21.9	25.6	26.6	26.0	27.0	27.4
4H	12H	20.0	21.0	20.4	21.4	21.8	26.1	27.1	26.6	27.5	28.0
	2H	19.3	20.4	19.7	20.8	21.2	21.2	22.4	21.6	22.7	23.1
	3H	20.5	21.5	20.9	21.9	22.3	23.4	24.4	23.9	24.8	25.2
	4H	20.9	21.8	21.4	22.3	22.7	24.6	25.5	25.1	25.9	26.4
	6H	21.2	22.0	21.7	22.4	22.9	25.8	26.6	26.3	27.1	27.5
8H	8H	21.2	22.0	21.7	22.4	22.9	26.5	27.2	26.9	27.6	28.1
	12H	21.3	21.9	21.8	22.4	22.9	27.1	27.8	27.6	28.3	28.8
	4H	21.5	22.2	21.9	22.6	23.1	24.7	25.4	25.2	25.9	26.4
	6H	21.9	22.5	22.4	23.0	23.5	26.1	26.7	26.6	27.2	27.7
	8H	22.0	22.5	22.5	23.0	23.6	26.8	27.4	27.4	27.9	28.4
12H	12H	22.0	22.5	22.6	23.0	23.6	27.6	28.1	28.2	28.6	29.2
	4H	21.6	22.2	22.1	22.7	23.2	24.7	25.4	25.2	25.8	26.4
	6H	22.1	22.6	22.6	23.1	23.7	26.1	26.6	26.6	27.1	27.7
	8H	22.2	22.7	22.8	23.2	23.8	26.9	27.3	27.4	27.9	28.4
	Variation of the observer position for the luminaire distances S										
S = 1.0H		+0.2 / -0.2					+0.1 / -0.1				
S = 1.5H		+0.3 / -0.6					+0.3 / -0.2				
S = 2.0H		+0.5 / -1.0					+0.5 / -0.6				
Standard table		BK04					---				
Correction Summand		4.4					---				
Corrected Glare Indices referring to 6500lm Total Luminous Flux											

Dimensional Drawing

